

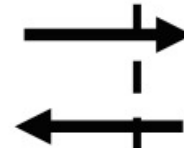
EFSCA – 08/06/2016

Patrick Van den Nieuwenhof

Train-the-trainer in fire fighting through decentralized cooperation

- Presentation of organization
- Short overview KA2 Erasmus+
- Proposal for a project

ADR Flanders



The Open Network for community development

- Working Groups
- Healthcare
 - Youth
 - Social organizations
 - Tourism
 - Culture
 - Agriculture
 - ...

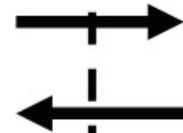
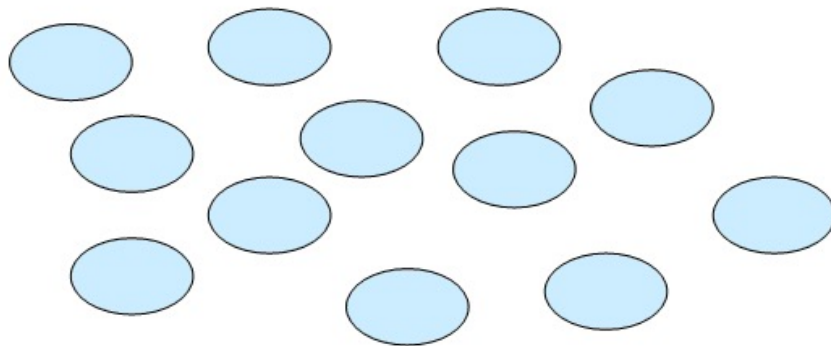
- Regional cooperation
- Limburg
 - Campine
 - Flemish Brabant
 - East Flanders
 - West Flanders

Working Groups

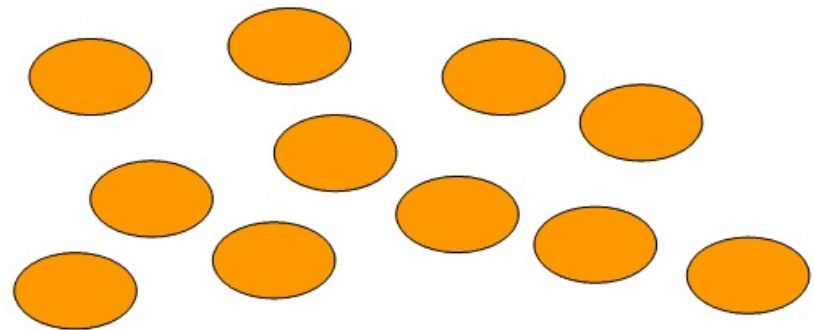
Local groups in Romania are represented by logos for România adam, CLS, AGLT, OLF, and OLB.

- Regional coordinators

Local groups Flanders



Local groups Romania









Erasmus+

KA2 strategic partnerships

- activities that strengthen the cooperation between organisations with a view to establishing **exchanges of practices**;
- activities that promote the development, testing and/or implementation of **innovative practices** in the field of education, training and youth;
- activities that facilitate the **recognition and validation of knowledge, skills and competences** acquired through formal, non-formal and informal learning;
- activities of **cooperation between regional authorities** to promote the development of education, training and youth systems and their integration in actions of local and regional development;

- activities to support learners with **disabilities/special needs** to complete education cycles and facilitate their transition into the labour market, including by combating **segregation and discrimination** in education for marginalised communities;

- activities to better prepare and deploy the education and training professionals for **equity, diversity and inclusion** challenges in the learning environment;

- transnational initiatives fostering entrepreneurial mind-sets and skills, to encourage **active citizenship and entrepreneurship (including social entrepreneurship)**, jointly carried out by two or more groups of young people from different countries.

<p>Eligible participating organisations</p>	<p>A participating organisation can be any public or private organisation, established in a Programme Country or in any Partner Country of the world (see section "Eligible Countries" in Part A of this Guide).</p> <p>For example, such organisation can be:</p> <ul style="list-style-type: none"> ▪ a higher education institution; ▪ a school/institute/educational centre (at any level, from pre-school to upper secondary education⁷⁴, and including vocational education and adult education); ▪ a non-profit organisation, association, NGO; ▪ a public or private, a small, medium or large enterprise (including social enterprises); ▪ a public body at local, regional or national level; ▪ a social partner or other representative of working life, including chambers of commerce, industry, craft/professional associations and trade unions; ▪ a research institute; ▪ a foundation; ▪ an inter-company training centre; ▪ enterprises providing shared training (collaborative training); ▪ a cultural organisation, library, museum; ▪ a body providing career guidance, professional counselling and information services; ▪ a body validating knowledge, skills and competences acquired through non-formal and informal learning; ▪ a European Youth NGO; ▪ a group of young people active in youth work but not necessarily in the context of a youth organisation (i.e. informal group of young people⁷⁵). <p>Higher education institutions (HEIs) established in a Programme Country must hold a valid Erasmus Charter for Higher Education (ECHE). An ECHE is not required for participating HEIs in Partner Countries, but they will have to sign up to its principles.</p>
<p>Who can apply?</p>	<p>Any participating organisation established in a Programme Country can be the applicant. This organisation applies on behalf of all participating organisations involved in the project.</p>

Number and profile of participating organisations

A Strategic Partnership is transnational and involves minimum three organisations from three different Programme Countries. There is no maximum number of partners. However, the budget for the management costs is capped (and equivalent to 10 partners). All participating organisations must be identified at the time of applying for a grant.

However, the following types of projects may involve two organisations from minimum two Programme Countries:

- Strategic Partnerships in the school education field which involve only schools. Such partnerships can only include schools from Programme Countries
- Strategic Partnerships between local/regional school authorities in the school education field. For each country involved in the project, the partnership must include at least:
 - one local or regional school authority
 - one school
 - one organisation active in the field of education, training and youth or in the labour market.
- Strategic Partnerships in the youth field which involve only youth organisations or groups of young people active in youth work but not necessarily in the context of a youth organisation.

Venue(s) of the activities	All the activities of a Strategic Partnership must take place in the countries of the organisations participating in the project.
Duration of project	<p>Partnerships in the youth field: between 6 and 36 months.</p> <p>Other types of Partnerships: between 24 and 36 months.</p> <p>The duration has to be chosen at application stage, based on the objective of the project and on the type of activities planned over time.</p> <p>In exceptional cases, the duration of a Strategic Partnership may be extended, upon request by the beneficiary and with the agreement of the National Agency, of up to 6 months and provided that the total duration does not exceed 3 years. In such a case, the total grant will not change. In all cases, projects must end not later than 31 August 2018.</p>
Where to apply?	<p>To the National Agency of the country in which the applicant organisation is established⁷⁶.</p> <p>Per deadline, the same consortium of partners can submit only one application and to one National Agency only.</p>
	<p>Partnerships in the fields of Higher Education, VET, School and Adult education:</p> <p>applicants have to submit their grant application by:</p> <p>31 March at 12:00 (midday Brussels time) for projects starting between 1 September and 31 December of the same year.</p>

Eligible costs		Financing mechanism	Amount		Rule of allocation
Project management and implementation	Project management (e.g. planning, finances, coordination and communication between partners, etc.); small scale learning/teaching/training materials, tools, approaches etc. Virtual cooperation and local project activities (e.g. class-room project work with learners, youth work activities, organisation and mentoring of embedded learning/training activities, etc.); information, promotion and dissemination (e.g. brochures, leaflets, web information, etc.). Costs linked to the implementation of transnational youth initiatives.	Unit costs	Contribution to the activities of the coordinating organisation: 500 EUR per month	Maximum 2750 EUR per month	Based on the duration of the Strategic Partnership and on the number of participating organisations involved
		Unit costs	Contribution to the activities of the other participating organisations: 250 EUR per organisation per month		
Transnational project meetings	Participation in meetings between project partners and hosted by one of the participating organisations for implementation and coordination purposes. Contribution to travel and subsistence costs	Unit costs	For travel distances between 100 and 1999KM: 575 EUR per participant per meeting	Maximum 23 000 EUR per year	Conditional: applicants must justify the need for the meetings in terms of number of meetings and participants involved. Travel distances must be calculated using the distance calculator supported by the European Commission.
			For travel distances of 2000 KM or more: 760 EUR per participant per meeting		

Eligible costs		Financing mechanism	Amount	Rule of allocation
Intellectual outputs	Intellectual outputs/tangible deliverables of the project (such as curricula, pedagogical and youth work materials, open educational resources (OER), IT tools, analyses, studies, peer-learning methods, etc.)	Unit costs	B1.1 per manager per day of work on the project	Conditional: staff costs for managers and administrative staff are expected to be covered already under "Project management and implementation". To prevent potential overlap with such item, applicants will have to justify the type and volume of staff costs applied for in relation to each output proposed. The outputs should be substantial in quality and quantity to qualify for this type of grant support. The outputs should prove their potential for wider use and exploitation, as well as for impact.
			B1.2 per researcher/ teacher /trainer/youth worker per day of work on the project	
			B1.3 per technician per day of work on the project	
			B1.4 per administrative staff per day of work on the project	
Multiplier events	Contribution to the costs linked to national and transnational conferences, seminars, events sharing and disseminating the intellectual outputs realised by the project (excluding costs for travel and subsistence of representatives of participating organisations involved in the event).	Unit costs	100 EUR per local participant (i.e. participants from the country where the event is taking place)	Conditional: support for multiplier events is provided only if in direct relation to the intellectual outputs of the project. A project without grant support for intellectual outputs cannot receive support for organising multiplier events.
			200 EUR per international participant (i.e. participants from other countries)	
Exceptional costs	Contribution to real costs related to subcontracting or purchase of goods and services. Costs for providing a financial guarantee, if the National Agency asks for it.	Real costs	75% of eligible costs Maximum of 50.000 EUR per project (excluding costs for providing a financial guarantee)	Conditional: subcontracting has to be related to services that cannot be provided directly by the participating organisations for duly justified reasons. Equipment cannot concern normal office equipment or equipment normally used by the participating organisations.
Special needs support	Additional costs directly related to participants with disabilities ⁷⁸	Real costs	100% of eligible costs	Conditional: the request for these costs must be motivated in the application form.

FUNDING RULES FOR TRANSNATIONAL TRAINING, TEACHING AND LEARNING ACTIVITIES CARRIED OUT WITHIN THE STRATEGIC PARTNERSHIP (OPTIONAL FUNDING)

Eligible costs		Financing mechanism	Amount		Rule of allocation
Travel	Contribution to the travel costs of participants, including accompanying persons, from their place of origin to the venue of the activity and return	Unit costs	For travel distances between 100 and 1 999KM: 275 EUR per participant		
			For travel distances of 2 000KM or more: 360 EUR per participant		
Individual support	Unit cost per day covering the subsistence of participants, including accompanying persons, during the activity	Unit costs	Long term teaching or training assignments	up to the 14 th day of activity: B1.5 per day per participant	Conditional: applicants will have to justify that mobility activities are necessary to achieve the objectives and results of the project. Travel distances must be calculated using the distance calculator supported by the European Commission ⁷⁹ . The applicant must indicate the distance of a one-way travel to calculate the amount of the EU grant that will support the round trip ⁸⁰
			Long term mobility of youth workers	+ between the 15 th and 60 th day of activity: B1.6 per day per participant	
			Short term joint staff training events, teaching in Intensive Study Programmes and accompanying persons ⁸¹	+ between the 61 th day of activity and up to 12 months: B1.7 per day per participant	
			Long term mobility of pupils	up to the 14 th day of activity: 100 EUR per day per participant	
				+ between the 15 th and 60 th day of activity: 70 EUR per day per participant	
				B1.8 per month per participant	
			Short term activities for learners (blended mobility, short term pupils ¹)	up to the 14 th day of activity: 55 EUR per day per participant	
				+ between the 15 th and 60 th day of activity: 40 EUR per day per participant	

Working title

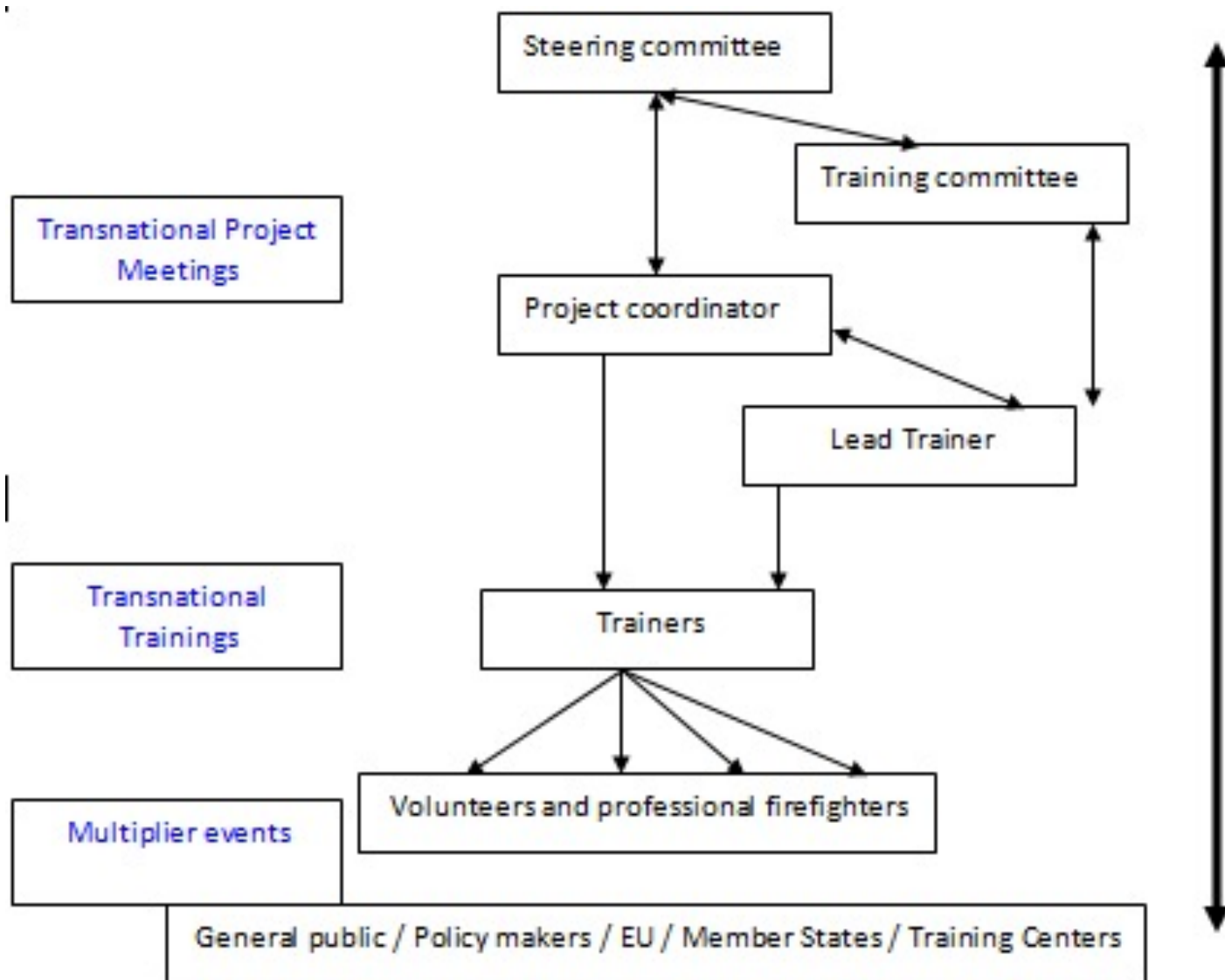
Train-the-trainer in fire fighting through
decentralized cooperation

Purpose

- The project develops common trainings for trainers from the participating countries. During the implementation of the project manuals and practical sessions will be developed. Trainers in firefighting will be able to organize trainings in their home countries for professionals and volunteers.
- Connecting local / regional fire brigades

Target groups

- Direct beneficiaries: Firefighting trainers from participating countries → teams of 4 trainers
- Indirect beneficiaries: Volunteer and professional firefighters which will be reached by national multiplier events.



Work Packages

WP 1: Coordination of project

WP 2: Development of manual → deliverable:
paper comparison EU structures + mapping
existing decentralized cooperation + manual

WP 3: Development of trainings for trainers →
outcome: trainers trained

WP 4: National multiplier events → outcome:
national teams trained

WP 5: European multiplier event → deliverable:
proposal for EU label for trainers

WP 6: Communication

Timing

- Deadline March 31 2017
- Until September / October 2016
 - Writing draft
 - PIC numbers
 - Meeting with potential partners
- November / December 2016
 - Improving draft
- January / March 2017
 - Formalization of applications
- August 2017
 - Start of project

- Action Villages Romania Flanders
- Korte Begijnenstraat 18
- 2300 Turnhout
- Belgium
- T: 0032 478 40 36 47
- patrick.vandennieuwenhof@adrvlaanderen.be
and patrick.nieuwenhof@hotmail.com